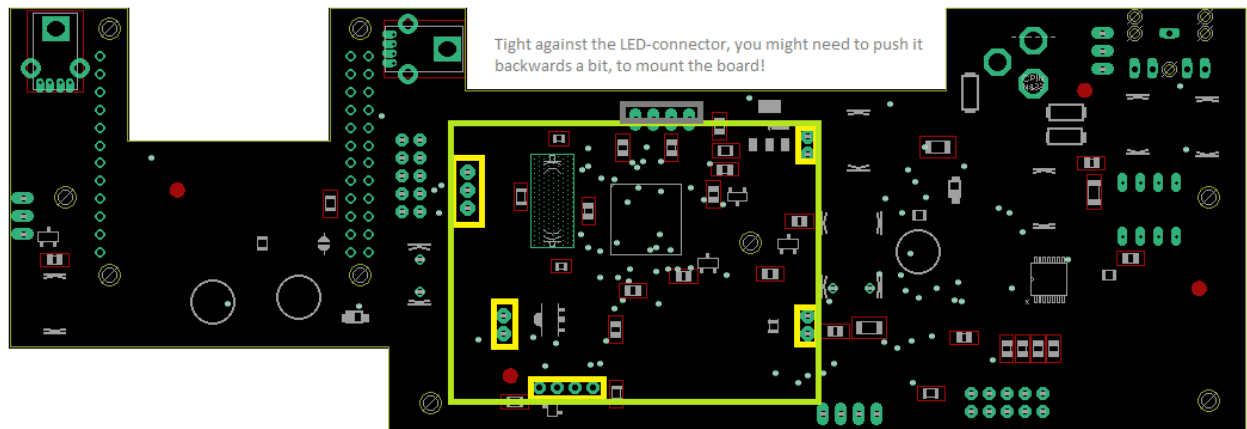


Connections:

- FAN (NC), 12V or 5V Fan max 100mA centre = - of the fan (needs special Pi-Star executable)
- Pi-Radio, use ribbon-cable to add pi-radio. Uses dev/ttyS2 in PiStar
- LED, 3 outputs max 10 mA. Wires from left to right: Grn, Blue, Black, Red
- Nextion Display, wires left to right: Red, Yellow, Blue, Black
- Control: connects to front PCB for control and Mic
- Int LS, RED top, NC, bottom Yellow



Note the yellow connectors are for the AMBE3000-board. To mount the board (light-green rectangle), you might need to push back the LED-connector a bit, so the board does not stay too much up on top of that connector.