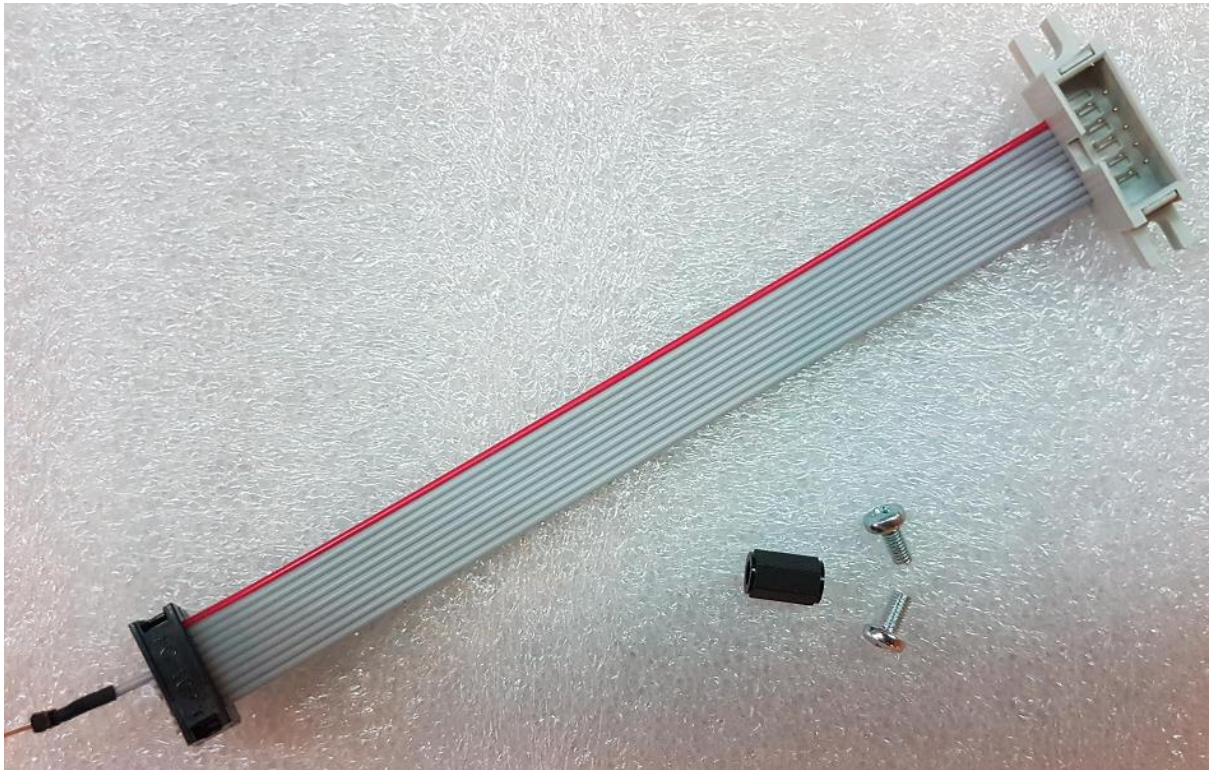


DVMEGA-CAST UPGRADE KIT

CONTECT OF THE KIT



HOW TO INSTALL

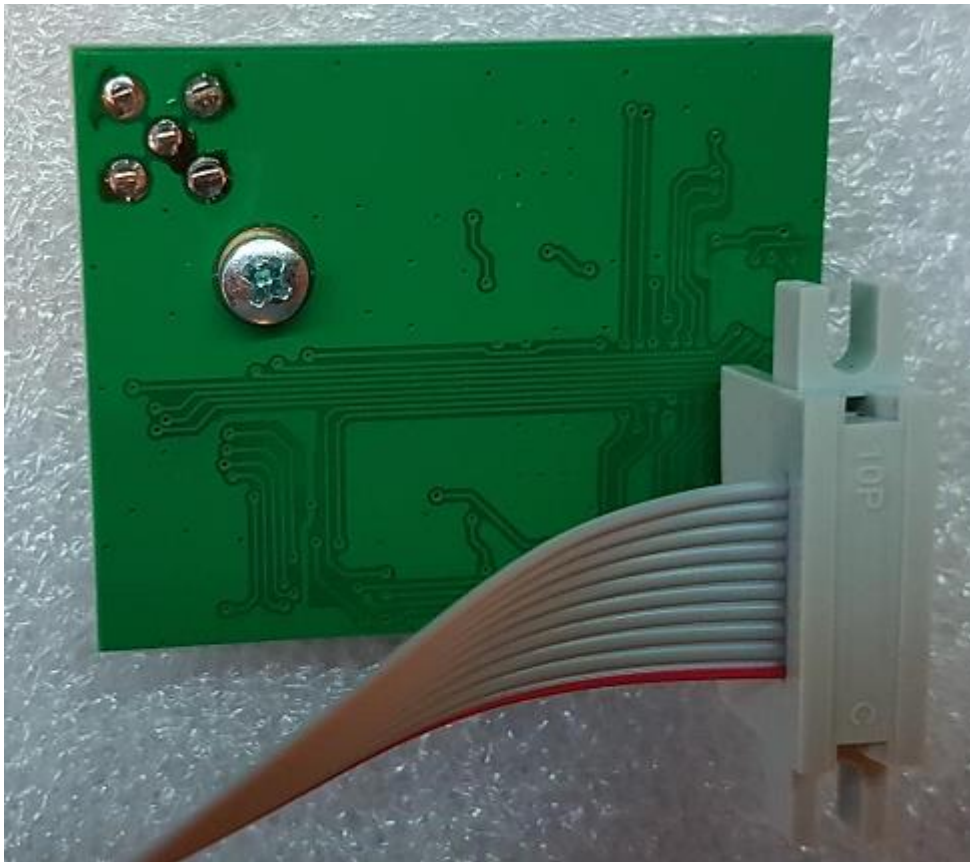
Open the radio, and look for the connector as shown below.

If installed, remove the small wire-connector from the header, and connect to the pin on the cable. Now position the 10-pin connector on the header (wire facing towards nano-pc).

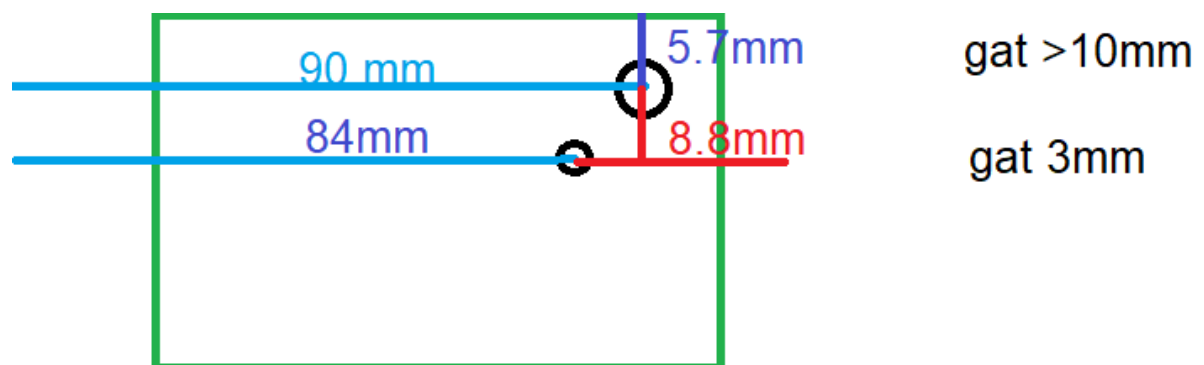


PLACING THE RADIO'S CONNECTOR

Now connect the cable's other end to the radio-board. Please note that due to placing the board you might need to cut the side of the connector. (Future models might not have the screw-lugs)



DRILLING / OPENING THE HOLES



Now you can mount the radio inside with the supplied materials.

SOME PHOTO'S OF AN INSTALLED BOARD

